

# MONTHLY MEMBERSHIP PROGRESS REPORT

LOCATION VIRGINIA

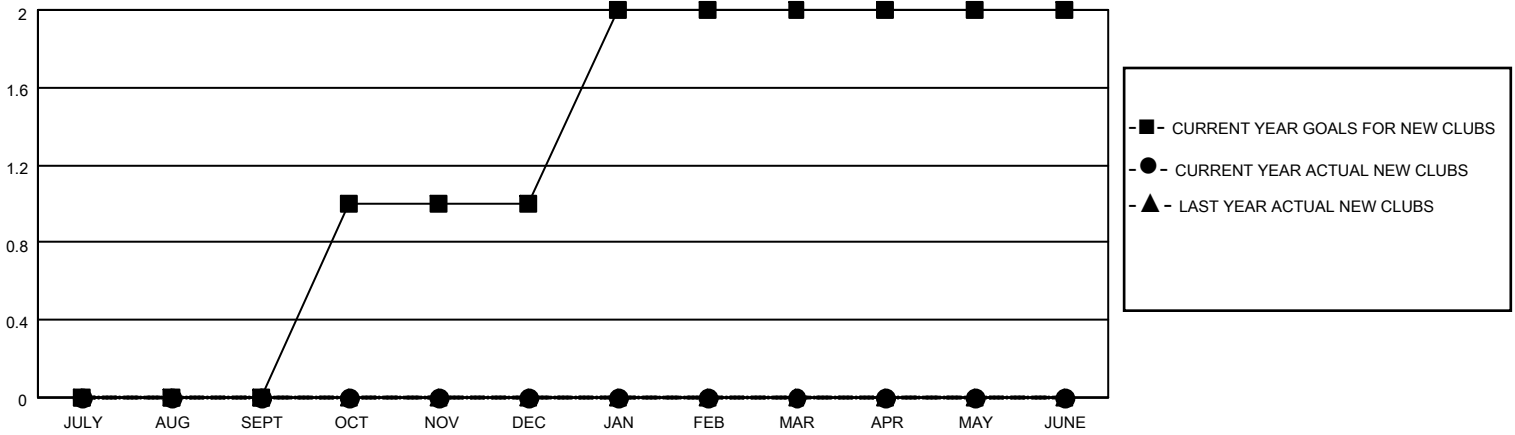
District 24 C

Results as of: 8/31/2020

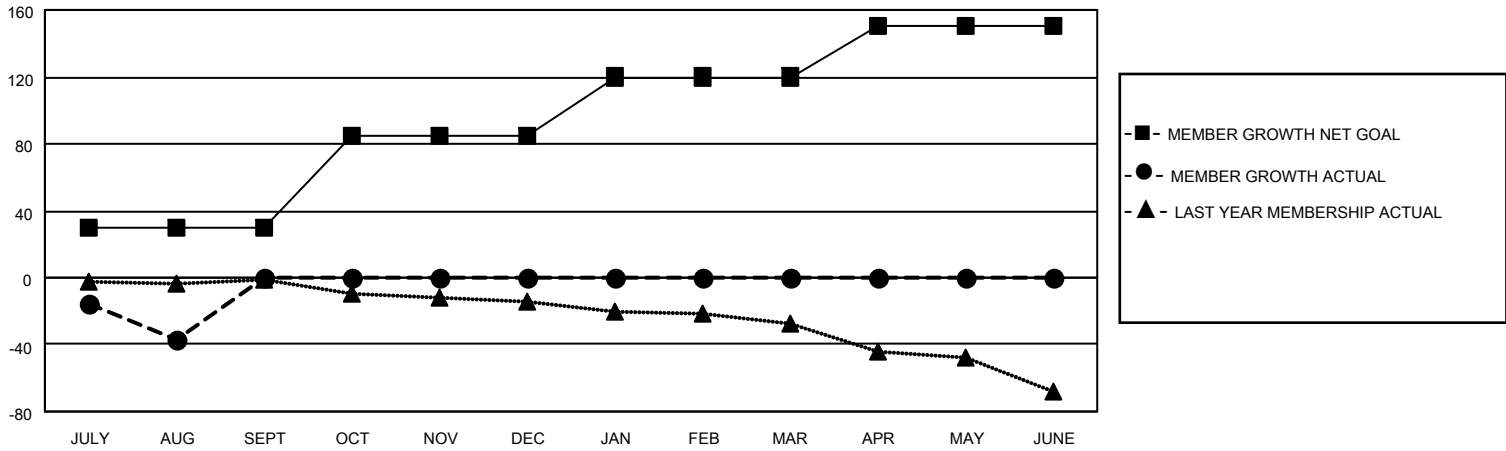
Clubs			
RESULTS FOR 2020-2021			
QUARTER	NEW CLUB GOAL	NEW CLUBS	DROPPED CLUBS
JULY/AUG/SEPT	0	0	2
OCT/NOV/DEC	1	0	0
JAN/FEB/MAR	1	0	0
APR/MAY/JUNE	0	0	0

Members			
RESULTS FOR 2020-2021			
QUARTER	MEMBER GROWTH NET GOAL	MEMBER GROWTH ACTUAL	DROPPED MEMBERS ACTUAL (including transfers)
JULY/AUG/SEPT	30	13	42
OCT/NOV/DEC	55	0	0
JAN/FEB/MAR	35	0	0
APR/MAY/JUNE	30	0	0

**GOALS AND ACTUAL NEW CLUBS CUMULATIVE**



**GOALS AND ACTUAL MEMBERS CUMULATIVE**



**DROPPED CLUBS: 2**

**3 CLUBS OF 68 ADDED 1 OR MORE NEW MEMBERS**

**GENDER DISTRIBUTION**

MALE 976 (68.16%)  
FEMALE 456 (31.84%)

**DROPPED MEMBERS**

DECEASED	1
CLUB CANCELLED	11
OTHER	30
<b>TOTAL</b>	<b>42</b>

[CLICK HERE FOR CUMULATIVE MEMBERSHIP DATA](#)

TOTAL FAMILY UNIT MEMBERS	280
FAMILY MEMBERS PAYING HALF DUES	141